



Annex X

Town of Hartsville



ANNEX X: TOWN OF HARTSVILLE

The Steuben County Multi-Jurisdictional Hazard Mitigation Plan Update 2026 relates to the multiple jurisdictions therein from a county-wide perspective. The shared plan includes the detailed hazard identification and risk assessment, a complete hazard event history, climate change trends and future impacts, location maps, extent tables and summary statements on both probability and potential severity. This annex is supplemental data provided specific to the municipality herein and focuses on the unique local risks and mitigation strategies.

JURISDICTION PROFILE

OVERVIEW

The Town of Hartsville is located in Steuben County, New York, with a population of 558 at the 2020 census. The Town of Hartsville is on the county's western border and is south of Hornell. According to the United States Census Bureau, the town has a total area of 36.2 square miles, of which 36.2 square miles is land and 0.04 square miles (0.06%) is water. The western town line is the border of Allegany County and the Town of Alfred. To the north is the Town of Hornellsville and to the south is the Town of Greenwood. The eastern town line is shared with the Town of Canisteo. Figure X-1 shows the general location of the Town of Hartsville.

TOWN OF HARTSVILLE CONTACT INFORMATION

Name: David Gerhard

Title: Town Supervisor

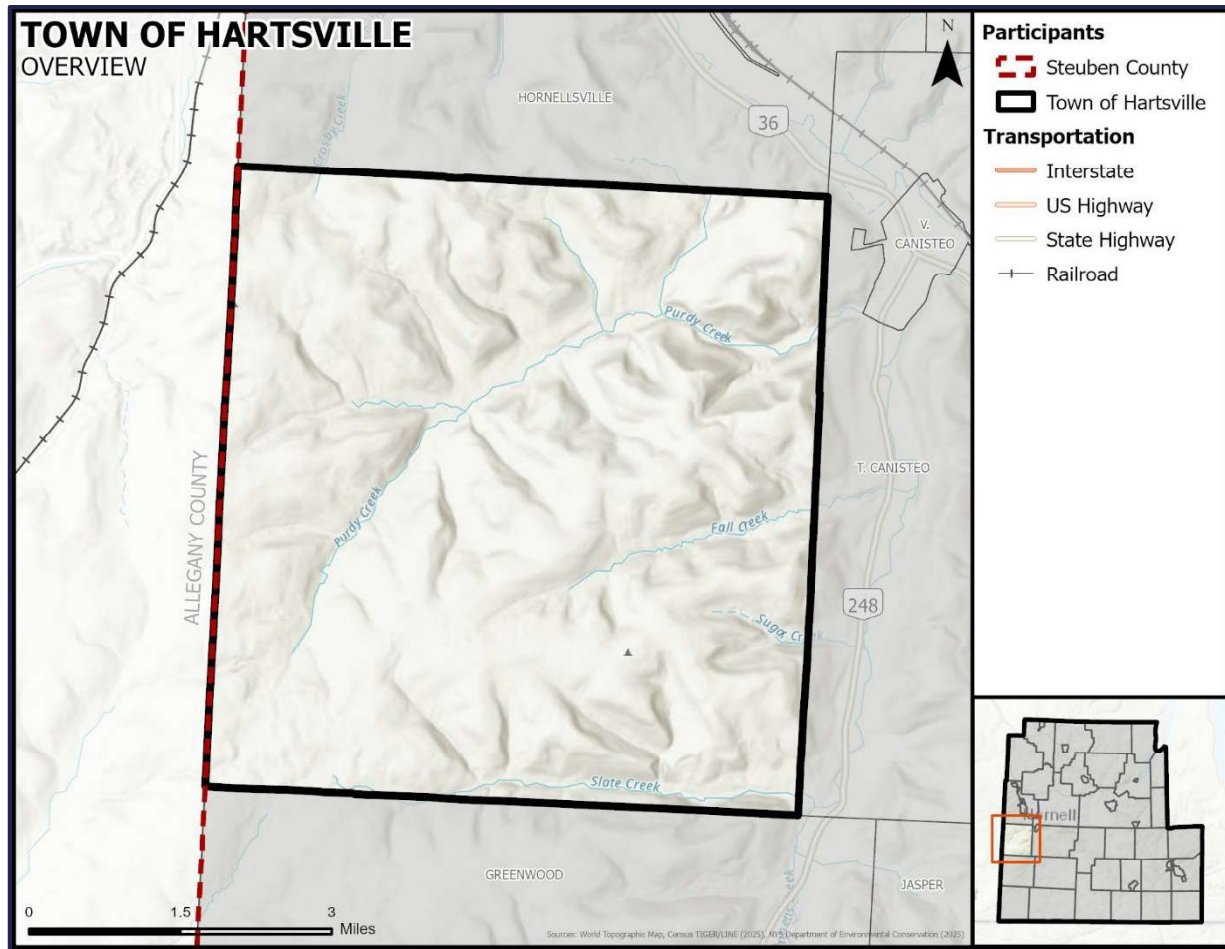
Phone: (607) 698-4940; 607-968-4974

Address: 5150 Purdy Creek Road
Hornell, NY 14843

Email: supervisor@townofhartsvilleny.gov

ANNEX X: TOWN OF HARTSVILLE

Figure X-1. Town of Hartsville Planning Area



POPULATION AND DEMOGRAPHICS

According to the 2020 Census population count, the Town of Hartsville has an official population of 558 residents, an 8 percent decrease since the 2010 census. Table X-1 shows the population distribution in the Town of Hartsville in 2010, 2020 (Census population count), and 2024 (2024 American Community Survey (ACS) five-year estimates. Note that in some cases the 2024 ACS estimates may differ from the 2020 Census count; the ACS estimates are used throughout this section for consistency.¹

Table X-1. Population Distribution for the Town of Hartsville

Jurisdiction	2010 (Census)	2020 (Census)	2024 (ACS Estimates)	Population Change			
				2010-2020	Percent	2010-2024	Percent
Town of Hartsville	609	558	512	-51	-8	-97	-16

¹ Source: <https://www.census.gov/geographies/reference-maps/2010/geo/2010-pumas/new-york>, <https://www.census.gov/en.html> and <https://www.census.gov/acs/www/data/data-tables-and-tools/data-profiles/2024/>

ANNEX X: TOWN OF HARTSVILLE

Table X-2 summarizes select characteristics of vulnerable or sensitive populations in the Town of Hartsville using data from the U.S. Census Bureau 2024 American Community Survey (ACS) five-year estimates.

Between official U.S. Census population counts, the estimate uses a formula based on new residential building permits and household size. It is simply an estimate and there are many variables involved in achieving an accurate estimation of people living in a given area at a given time.

Table X-2. Populations at Greater Risk for the Town of Hartsville

Jurisdiction	Population				
	65 and Older	Under 5	With A Disability	Below Poverty Level	Limited English Speaking
Town of Hartsville	128	25	88	29	2

EXISTING LAND USE AND DEVELOPMENT TRENDS

A review of housing can also give a picture of the built environment and the changes in vulnerability to various hazards in the Town of Hartsville. Table X-3 lists the total housing units for the Town of Hartsville, where data was available, between 2020 and 2024, utilizing 2020 Decennial Census data and U.S. Census Bureau 2024 ACS five-year estimates.

Table X-3. Total Housing Units for the Town of Hartsville, 2020 – 2024²

Jurisdiction	Total Housing Units					Housing Change	
	2020	2021	2022	2023	2024	2020 to 2024	Percent
Town of Hartsville	422	362	357	356	386	-36	-9

Certain types of housing found in the Town of Hartsville are more vulnerable than typical site-built, newly constructed residential structures. This includes mobile or manufactured homes, and single-family residences (SFR) that are built before 1980, as they are typically built to lower or less stringent construction standards than newer construction. Table X-4 includes housing inventory data for the Town of Hartsville per the American Community Survey five-year estimates.

Table X-4. Housing Inventory and Vulnerable Structures for the Town of Hartsville³

Jurisdiction	Housing Units		
	Total	SFR Built Prior to 1980	Manufactured Homes
Town of Hartsville	386	196	47

² U.S. Census Bureau: <https://www.census.gov>

³ The Housing Inventory and Vulnerable Structures are based off the 2024 American Community Survey 5-Year Estimates Data Profiles.

ANNEX X: TOWN OF HARTSVILLE

CHANGES IN VULNERABILITY

Population and housing trends vary by community throughout the planning area with the majority of communities seeing a decline in population and stagnant housing unit growth. Despite these trends, the infrastructure repair needs following a disaster remain constant. Declining populations do not change the footprint of infrastructure at risk in a community. Reduced populations decrease the tax base, reducing the revenue available for recovery. While the majority of participants are seeing declining populations, vulnerability is increasing across the planning area due to climate change impacts. The increase in frequency and severity of events currently outpaces the reduced exposure caused by declining populations.

The Town of Hartsville experienced an estimated decrease in overall population of 16 percent between 2010 and 2024. Decreasing housing unit estimates are attributed to survey methodology changes and data editing rather than physical changes. The overall population decrease, combined with stagnant development indicates a slight increase in vulnerability to all hazards in terms of populations and the built environment.

Table X-5. Changes in Vulnerability for the Town of Hartsville

Jurisdiction	Population Trend	Housing Trend	Changes in Vulnerability
Town of Hartsville	Decrease	Stagnant	Increase

Table X-6 lists the total number of building permits issued in the Town of Hartsville from 2019 through 2023, including the number of permits issued in the Special Flood Hazard Area and the percentage of SFHA permits issued overall. The issued permit was not located in the SFHA, indicating no increase in flood risk due to new development in the designated floodplain.

Table X-6. Building Permits, Town of Hartsville, 2019 – 2023

Jurisdiction	Total Building Permits	SFHA Permits	Percent of Permits Issued in SFHA
Town of Hartsville	1	0	0%

Changes in vulnerability are applicable to all natural hazards except when discussing dam failure as vulnerability for this hazard is discussed in relation to changes in the estimated inundation areas for profiled dams. The Town of Hartsville does not own any dam infrastructure and is not located within any estimated dam inundation areas, therefore, changes in vulnerability in the estimated inundation areas for profiled dams do not pertain to the municipality.

While flood and wildfire hazards feature geographical boundaries, changes in population and building inventory can increase overall vulnerability for these hazards, even when the trends occur outside of the known hazard boundary. A decrease in population might lower human-caused ignitions. However, declining population density often means less landscaping and maintenance, leading to an increase in wildfire fuels. Similarly, decreases in population do not automatically reduce flood vulnerability in a community. While fewer people are at risk, exposure remains the same for the built environment. Affordable housing, often located in higher risk areas, typically remains occupied despite declining populations.

ANNEX X: TOWN OF HARTSVILLE

Changes in population and building inventory may increase overall vulnerability for all natural hazards posing a risk to the planning area. Population decline does not inherently reduce natural hazard risk; rather, risk often persists, fueled by worsening hazards, deteriorating infrastructure, and increased vulnerability.

FUTURE DEVELOPMENT

To better understand how future growth and development in Steuben County might affect hazard vulnerability, it is useful to consider population growth, occupied and vacant land, the potential for future development in hazard areas, and current planning and growth management efforts.

Population projections from 2010 to 2040 are listed in Table X-7 as provided by Cornell University’s Program on Applied Demographics.⁴ **This information is only available at the County level.** The projections for the planning area reflect a decrease in density for the County, which would indicate stagnant projected development.

Table X-7. Steuben County Population Projections

Land Area (square miles)	Population							
	2010		2020		2030		2040	
	Total	Density	Total	Density	Total	Density	Total	Density
1,390.51	98,990	71.19	96,181	69.17	91,516	65.81	84,917	61.07

PLAN MAINTENANCE

The Steuben County Hazard Mitigation Plan Update provides explanation on how each participating jurisdiction will be involved in implementing, evaluating, and enhancing the Plan over time. Please see Section 21 of this Plan for additional information regarding plan maintenance for the entire planning area.

Periodic revisions of the Plan are required to ensure that goals, objectives, and mitigation actions are kept current. When the plan is discussed in these sections it includes risk assessment and mitigation actions as a part of the monitoring, evaluating, updating and review process. Revisions may be required to ensure the Plan remains in compliance with federal and state statutes and regulations. Table X-8 indicates the department and title of the party responsible for Plan monitoring, evaluating, updating, and review of the Plan.

Table X-8. Team Member Responsible for Plan Monitoring, Evaluating, and Updating the Plan

Jurisdiction	Title
Town of Hartsville	Town Supervisor

⁴ Cornell University: <https://pad.human.cornell.edu/counties/projections.cfm>

ANNEX X: TOWN OF HARTSVILLE

PUBLIC AND STAKEHOLDER PARTICIPATION

A series of public meetings were held throughout the Steuben County planning area to collect public and stakeholder input. Topics of discussion included the purpose of hazard mitigation, discussion of the planning process, and types of natural hazards. In addition, a public survey was developed to solicit public input during the planning process from citizens and stakeholders and to obtain data regarding the identification of any potential hazard mitigation actions or problem areas. The survey was promoted by local officials and posted online for public access. A total of two surveys were completed for the Town of Hartsville. Additional meeting documentation and survey results can be viewed in Appendix F and Appendix C, respectively.

The draft Plan was made available to the general public for review and comment on Steuben County's website for 30 days. To ensure opportunities are given to all citizens including those without internet access, a paper copy of the draft plan annexes was also available at municipal offices and public library locations with a comment form that included an email and phone number for the public to provide feedback. Refer to Section 2 for additional information on public involvement in the planning process.

Public input was an integral part of the preparation of this Plan and will continue to be essential for Plan updates. The public will be directly involved in the annual evaluation, monitoring, reviews and cyclical updates. Changes or suggestions to improve or update the Plan will provide opportunities for additional public input. The public can review the Plan on the Town of Hartsville's website, where officials and the public are invited to provide ongoing feedback, via email. A paper copy of the entire Plan Update will be kept at the Steuben County Office of Emergency Services.

The Planning Team may also designate voluntary citizens from the planning area or willing stakeholder members from the private sector businesses that were involved in the Plan's development to provide feedback on an annual basis. It is important that stakeholders and the immediate community maintain a vested interest in preserving the functionality of the planning area as it pertains to the overall goals of the mitigation plan. The Planning Team is responsible for notifying stakeholders and community members on an annual basis and maintaining the Plan.

Media, including local newspapers and radio stations, will be used to notify the public of any maintenance or periodic review activities during the implementation, monitoring, and evaluation phases. Additionally, local news media will be contacted to cover information regarding Plan updates, the status of grant applications, and project implementation. Local and social media outlets will keep the public and stakeholders apprised of potential opportunities to fund and implement mitigation projects identified in the Plan.

ANNEX X: TOWN OF HARTSVILLE

HAZARD PROFILES

DAM FAILURE

The Town of Hartsville is not profiling dam failure. The community does not own any dam infrastructure, is not located within any estimated dam inundation zones, and has not been impacted by a past dam breach. Downstream flood risks associated with a potential dam breach are evaluated within the flood hazard profile. Therefore, this hazard does not require further analysis.

ANNEX X: TOWN OF HARTSVILLE

DROUGHT

HAZARD DESCRIPTION, LOCATION, EXTENT, & HISTORICAL OCCURRENCES

The Steuben County Multi-Jurisdictional Hazard Mitigation Plan Update provides a hazard description, location, and extent of the drought hazard for each participating jurisdiction (Section 6). Drought conditions are not confined to specific geographic boundaries and are considered similar for all participating jurisdictions throughout the planning area. Historical drought data for the County, including the Town of Hartsville, are provided on a County-wide basis per the NCEI database. Therefore, all historical events are listed in Section 6 of the Plan Update.

PROBABILITY OF FUTURE EVENTS

According to historical records for the Steuben County planning area, the Town of Hartsville has the probability of a drought event occurring approximately once every year. This frequency supports a “Highly Likely” probability of future events.

VULNERABILITY AND IMPACT

While the entirety of the Steuben County planning area, including the Town of Hartsville, is exposed to drought events, existing buildings, infrastructure, and critical facilities are not likely to sustain significant damage from these events. However, drought impacts are mostly experienced in water shortages and crop and livestock losses on agricultural lands and typically have minimal impact on buildings.

The Town of Hartsville planning team members identified critical facilities as assets that are considered the most important to the planning area and are susceptible to a range of potential hazard impacts caused by drought events. Drought impacts on critical facilities are similar across the entire planning area and are listed in detail in the drought hazard profile (Section 6). The following critical facilities would be vulnerable to drought events in the Town of Hartsville:

Table X-9. Critical Facilities at Risk

Type	Number
Municipal – City / Town / Village Hall	1

The population over 65 in the Town of Hartsville is estimated at 25 percent of the Town’s total population and children under the age of 5 are estimated at 5 percent. The population with a disability is estimated at 17 percent of the Town’s total population. An estimated 5.7 percent of the Town of Hartsville’s population live below the poverty level and less than 1 percent of the population speaks English “less than very well” (Table X-10).

Table X-10. Populations at Greater Risk

Jurisdiction	65 and Older	Under 5	With a Disability	Below Poverty Level	Limited English Speaking
Town of Hartsville	128	25	88	29	2

Historic losses are reported on a county-wide basis. Please see Section 6 of this Plan for additional information on historical and annualized losses for the entire planning area.

ANNEX X: TOWN OF HARTSVILLE

EXTREME COLD

HAZARD DESCRIPTION, LOCATION, EXTENT, & HISTORICAL OCCURRENCES

The Steuben County Multi-Jurisdictional Hazard Mitigation Plan Update provides a hazard description, location, and extent of the extreme cold hazard for each participating jurisdiction (Section 7). Extreme cold events are not confined to specific geographic boundaries and are considered similar for all participating jurisdictions throughout the planning area. For the purposes of evaluating this hazard, the following NCEI reporting categories are included under extreme cold: cold/wind chill, extreme cold, and frost/freeze. Historical extreme cold data for the County, including the Town of Hartsville, is provided on a county-wide basis per the NCEI database. Therefore, all historical events are listed in Section 7 of the Plan Update.

PROBABILITY OF FUTURE EVENTS

According to historical records for the Steuben County planning area, the Town of Hartsville can expect to experience approximately three to four cold events each year. This frequency supports a “Highly Likely” probability of future events

VULNERABILITY AND IMPACT

While the entirety of the Steuben County planning area, including the Town of Hartsville, is exposed to extreme cold events, existing buildings, infrastructure, and critical facilities are not likely to sustain significant damage from these events. However, the Town of Hartsville planning team members identified the following critical facilities (Table X-11) as assets that are considered the most important to the planning area. These facilities are susceptible to a range of impacts caused by this hazard. Extreme cold impacts to critical facilities are similar across the entire planning area and are listed in detail in the extreme cold hazard profile (Section 7). The following critical facilities would be vulnerable to extreme cold events in the Town of Hartsville:

Table X-11. Critical Facilities at Risk

Type	Number
Municipal – City / Town / Village Hall	1

The population over 65 in the Town of Hartsville is estimated at 25 percent of the Town’s total population and children under the age of 5 are estimated at 5 percent. The population with a disability is estimated at 17 percent of the Town’s total population. An estimated 5.7 percent of the Town of Hartsville’s population live below the poverty level and less than 1 percent of the population speaks English “less than very well” (Table X-12).

Table X-12. Populations at Greater Risk

Jurisdiction	65 and Older	Under 5	With a Disability	Below Poverty Level	Limited English Speaking
Town of Hartsville	128	25	88	29	2

Historic losses are reported on a county-wide basis. Please see Section 7 of this Plan for additional information on historical and annualized losses for the entire planning area.

ANNEX X: TOWN OF HARTSVILLE

EXTREME HEAT

HAZARD DESCRIPTION, LOCATION, EXTENT, & HISTORICAL OCCURRENCES

The Steuben County Multi-Jurisdictional Hazard Mitigation Plan Update provides a hazard description, location, and extent of the extreme heat hazard for each participating jurisdiction (Section 8). Extreme heat events are not confined to specific geographic boundaries and are considered similar for all participating jurisdictions throughout the planning area. Historical extreme heat data for the County, including the Town of Hartsville, are provided on a County-wide basis per the NCEI database. Therefore, all historical events are listed in Section 8 of the Plan Update.

PROBABILITY OF FUTURE EVENTS

According to historical records for the Steuben County planning area, the Town of Hartsville can expect to experience an extreme category of “Caution” every summer. This supports a “Highly Likely” probability of future events for the planning area, meaning an event is probable each year.

VULNERABILITY AND IMPACT

While the entirety of the Steuben County planning area, including the Town of Hartsville, is exposed to extreme heat events, existing buildings, infrastructure, and critical facilities are not likely to sustain significant damage from these events. However, the Town of Hartsville planning team members identified the following critical facilities (Table X-13) as assets that are considered the most important to the planning area. These facilities are susceptible to a range of impacts caused by this hazard. Extreme heat impacts to critical facilities are similar across the entire planning area and are listed in detail in the extreme heat hazard profile (Section 8). The following critical facilities would be vulnerable to extreme heat events in the Town of Hartsville:

Table X-13 Critical Facilities at Risk

Type	Number
Municipal – City / Town / Village Hall	1

Extreme temperatures do, however, present a significant threat to life and safety for the population of the County as a whole. Heat casualties, for example, are typically caused by a lack of adequate air-conditioning or heat exhaustion. Some vulnerable and underserved populations are disproportionately impacted by extreme heat events as they may be more susceptible to health risks.

The population over 65 in the Town of Hartsville is estimated at 25 percent of the Town’s total population and children under the age of 5 are estimated at 5 percent. The population with a disability is estimated at 17 percent of the Town’s total population. An estimated 5.7 percent of the Town of Hartsville’s population live below the poverty level and less than 1 percent of the population speaks English “less than very well” (Table X-14).

ANNEX X: TOWN OF HARTSVILLE

Table X-14. Populations at Greater Risk

Jurisdiction	65 and Older	Under 5	With a Disability	Below Poverty Level	Limited English Speaking
Town of Hartsville	128	25	88	29	2

Historic losses are reported on a county-wide basis. Please see Section 8 of this Plan for additional information on historical and annualized losses for the entire planning area.

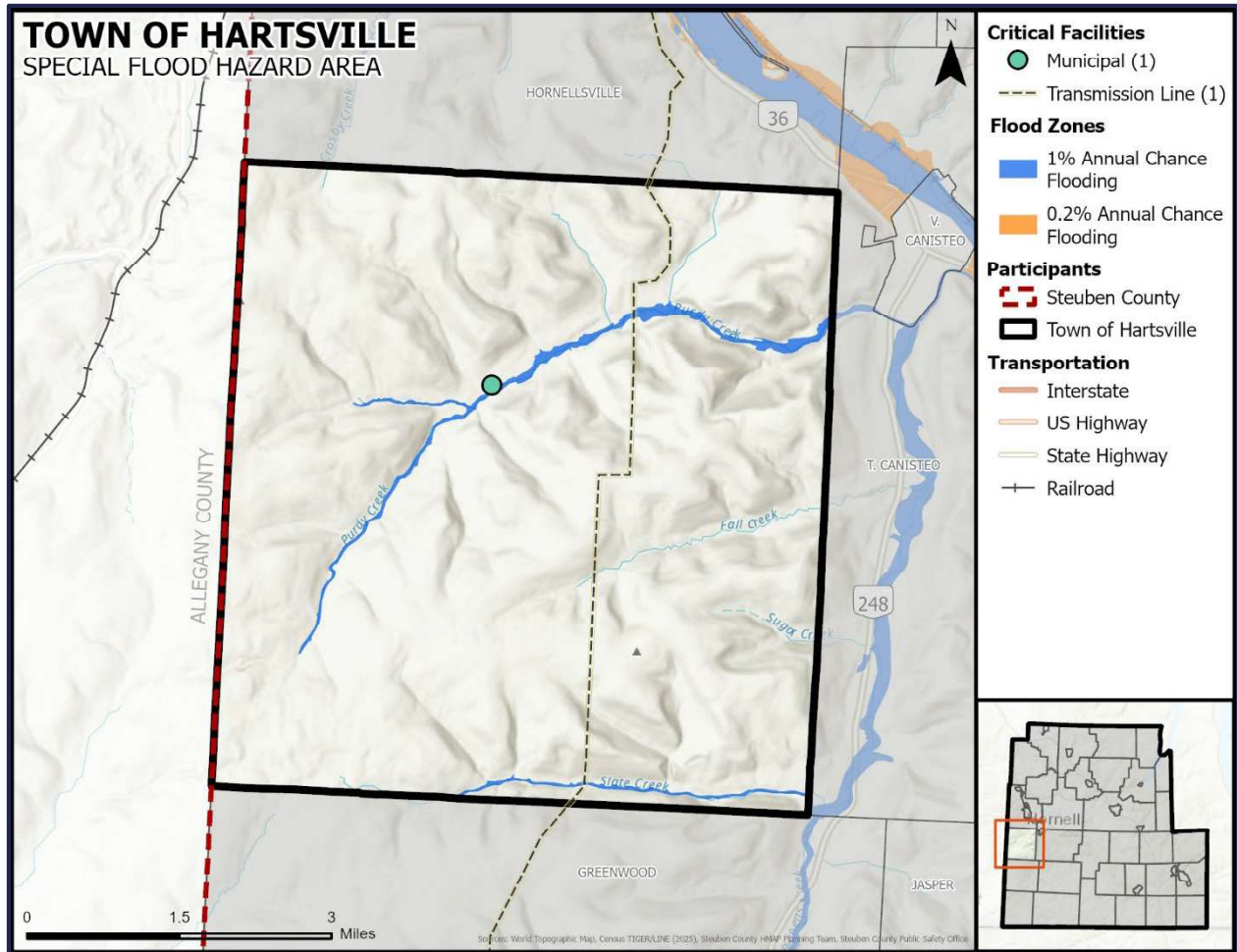
ANNEX X: TOWN OF HARTSVILLE

FLOOD

HAZARD DESCRIPTION, LOCATION, & EXTENT

The Steuben County Multi-Jurisdictional Hazard Mitigation Plan Update provides a hazard description and extent of the flood hazard for the entire Steuben County planning area in Section 9. Full flood zone delineations are available, including some areas with base flood elevations where applicable. The location of estimated flood zones for the Town of Hartsville, based on data provided by the Steuben County Public Works Department, is provided in Figure X-2. FEMA's regulatory flood insurance rate maps are available for all jurisdictions in Appendix I.

Figure X-2. Estimated Flood Zones in the Town of Hartsville



HISTORICAL OCCURRENCES

From January 1996 through June 2025, no flood events were known to have impacted the Town of Hartsville, based upon NCEI records. Flood events are often reported on a county-wide basis, or under-reported for individual municipalities, particularly in smaller communities.

In addition to the flood events reported to the NCEI, the U.S. Army Corps of Engineers (USACE) has an Ice Jams Database which currently includes over 18,000 records of ice jam flood events across the United States. There are 62 reported ice jam events for the Steuben County planning

ANNEX X: TOWN OF HARTSVILLE

area between 1920 and 2025. There are no reported monetary damages for these events, however, it is highly likely that damage estimates were simply not recorded. Ice jams are historically known to impact local jurisdictions. There have been no ice jam flood events the Town of Hartsville since 1920.

PROBABILITY OF FUTURE EVENTS

While some incidents may be reported at the local municipal level, as indicated above, County level events provide a more robust risk assessment for each participating jurisdiction. According to historical records for the Steuben County planning area, flooding is considered “Highly Likely” for the Town of Hartsville, meaning an event is probable within the next year. It is noted that the probability of ice jam floods is slightly lower when evaluated independently with an ice jam related flood event probable in the next three years.

VULNERABILITY AND IMPACT

The Town of Hartsville planning team members identified critical facilities as assets that are considered the most important to the planning area and are susceptible to a range of potential impacts from a variety of natural hazards, including those facilities located in the regulatory floodplain. There are no critical facilities located in the floodplain in the Town of Hartsville.

While all citizens are at risk of the impacts of a flood, forced relocation and disaster recovery disproportionately impacts low-income residents who lack the financial means to travel, afford a long-term stay away from home, and to rebuild or repair their homes. The population over 65 in the Town of Hartsville is estimated at 25 percent of the Town’s total population and children under the age of 5 are estimated at 5 percent. The population with a disability is estimated at 17 percent of the Town’s total population. An estimated 5.7 percent of the Town of Hartsville’s population live below the poverty level and less than 1 percent of the population speaks English “less than very well” (Table X-15).

Table X-15. Populations at Greater Risk

Jurisdiction	65 and Older	Under 5	With a Disability	Below Poverty Level	Limited English Speaking
Town of Hartsville	128	25	88	29	2

The severity of a flooding event varies depending on the relative risk to citizens and structures located within each jurisdiction. Table X-16 depicts the level of impact for the Town of Hartsville.

Table X-16. Town of Hartsville Impact

Jurisdiction	Impact	Description
Town of Hartsville	Minor	The Town of Hartsville could anticipate an impact of “Minor” with the complete shutdown of critical facilities for up to one week, more than 10 percent of property destroyed or with major damage, and injuries and illnesses do not result in permanent disability.

ANNEX X: TOWN OF HARTSVILLE

NATIONAL FLOOD INSURANCE PROGRAM (NFIP) PARTICIPATION

The Town of Hartsville currently participates in the National Flood Insurance Program and is in good standing. The community has adopted a flood damage prevention ordinance that includes the minimum requirements for development in special flood hazard areas.

NFIP COMPLIANCE AND MAINTENANCE

The Town of Hartsville has developed mitigation actions that relate to NFIP participation, maintenance or compliance. Compliance and maintenance actions can be found in Section 20. Flooding was identified by the Town of Hartsville as a high-risk hazard during hazard ranking activities at the Risk Assessment Workshop. Many of the mitigation actions for the jurisdiction were developed with flood mitigation in mind.

The Town of Hartsville Building Inspector is designated as the local floodplain administrator and is responsible for maintaining compliance in the NFIP through development regulations as outlines in the community flood damage prevention ordinance (Table X-17). The local flood damage prevention ordinance is available for review at the local floodplain administrator's office. In addition, the ordinance can be viewed using the link provided below (Table X-17).

Table X-17. Flood Damage Prevention Ordinance

Jurisdiction	Flood Damage Prevention Ordinance
Town of Hartsville	Available Upon Request at Town Hall

The floodplain administrator is responsible for

- Permitting and inspecting construction activity in the floodplain
- Ensuring conformance with floodplain permit requirements
- Enforcing floodplain regulations
- Identifying Substantially Damaged structures and ensuring compliance during reconstruction
- Identifying Substantial Improvements in proposed development permit applications and ensuring compliance during construction
- Providing floodplain map and flood insurance information to the public
- Coordinating with FEMA to maintain the community's participation in the NFIP
- Keeping records of construction in the floodplain

Table X-18 provides the most recent Community Assistance Visits (CAV) and Community Assistance Calls (CAC) dates along with the current status for the jurisdiction.

Table X-18. Compliance History

Jurisdiction	Date of Last CAV	Date of Last CAC	Current NFIP Status	Policies in Force
Town of Hartsville	N/A	07/31/12	Good Standing	2

REPETITIVE LOSS

The Town of Hartsville currently has no repetitive loss or severe repetitive loss properties.

ANNEX X: TOWN OF HARTSVILLE

HAIL

HAZARD DESCRIPTION, LOCATION, & EXTENT

The Steuben County Multi-Jurisdictional Hazard Mitigation Plan Update provides a hazard description, location and extent of the hail hazard for each participating jurisdiction (Section 10). Hail events are not confined to specific geographic boundaries and are considered similar for all participating jurisdictions throughout the planning area.

HISTORICAL OCCURRENCES

Historical evidence for the Steuben County planning area demonstrates that the Town of Hartsville is vulnerable to hail events overall, even though no events have been recorded in the NCEI within the municipal boundaries. No historical hail events impacted the Town of Hartsville from January 1996 through June 2025; these events were reported to NCEI and NOAA databases and may not represent all hail events to have occurred during the past 29.5 years. With no historical hail events reported for the Town of Hartsville, there have also been no recorded events since the 2019 Plan.

PROBABILITY OF FUTURE EVENTS

Historical hail events are reported on a county-wide basis. While some incidents may be reported at the local municipal level, as indicated above, county level events provide a more robust risk assessment for each participating jurisdiction. According to historical records, the Steuben County planning area, including the Town of Hartsville, can expect approximately three to four hail events every year. This frequency supports a “Highly Likely” probability of future events.

VULNERABILITY AND IMPACT

The Town of Hartsville planning team members identified the following critical facilities as assets that are considered the most important to the planning area. These facilities are susceptible to a range of impacts caused by hailstorm events. Hail impacts to critical facilities are similar across the entire planning area and are listed in detail in the hail hazard profile (Section 10).

Table X-19. Critical Facilities at Risk

Type	Number
Municipal – City / Town / Village Hall	1

The U.S. Census data indicates a total of 47 manufactured homes are located in the Town of Hartsville (12 percent of total housing stock). In addition, 51 percent (approximately 196 structures) of the housing units were built before 1980. These structures would typically be built to lower or less stringent construction standards than newer construction and may be more susceptible to damage during significant hail events.

Table X-20. Structures at Greater Risk

Jurisdiction	Manufactured Homes	SFR Structures Built Before 1980
Town of Hartsville	47	196

While all citizens are at risk of the impacts of hail, forced relocation and disaster recovery disproportionately impacts low-income residents who lack the financial means to travel, afford a

ANNEX X: TOWN OF HARTSVILLE

long-term stay away from home, and to rebuild or repair their homes. The population over 65 in the Town of Hartsville is estimated at 25 percent of the Town’s total population and children under the age of 5 are estimated at 5 percent. The population with a disability is estimated at 17 percent of the Town’s total population. An estimated 5.7 percent of the Town of Hartsville’s population live below the poverty level and less than 1 percent of the population speaks English “less than very well” (Table X-21).

Table X-21. Populations at Greater Risk

Jurisdiction	65 and Older	Under 5	With a Disability	Below Poverty Level	Limited English Speaking
Town of Hartsville	128	25	88	29	2

Overall, the average loss estimate of property and crops in the Town of Hartsville is \$0 with an average annualized loss of \$0. Based on historic loss and damages, the impact of hail damages on the Town of Hartsville can be considered “Limited” severity of impact, meaning minor quality of life lost, critical facilities and services shut down for 24 hours or less, and less than 10 percent of property destroyed or with major damage.

Table X-22. Estimated Annualized Losses

Jurisdiction	Total Property & Crop Loss	Annual Loss Estimate
Town of Hartsville	\$0	\$0

ANNEX X: TOWN OF HARTSVILLE

ICE STORM

HAZARD DESCRIPTION, LOCATION, EXTENT, & HISTORICAL OCCURRENCES

The Steuben County Multi-Jurisdictional Hazard Mitigation Plan Update provides a hazard description, location, and extent of the ice storm hazard for each participating jurisdiction (Section 11). Ice storm events are not confined to specific geographic boundaries and are considered similar for all participating jurisdictions throughout the planning area. For the purposes of evaluating this hazard, the following NCEI reporting categories are included under ice storm: sleet, freezing fog, and ice storm. Historical ice storm data for the county, including the Town of Hartsville, are provided on a county-wide basis per the NCEI database. Therefore, all historical events are listed in Section 11 of the Plan Update.

PROBABILITY OF FUTURE EVENTS

According to historical records for the Steuben County planning area, the Town of Hartsville can expect to experience an ice storm event in the next three years. This frequency supports a “Likely” probability of future events.

VULNERABILITY AND IMPACT

While the entirety of the Steuben County planning area, including the Town of Hartsville, is exposed to ice storm events, existing buildings, infrastructure, and critical facilities are not likely to sustain significant damage from these events. However, the Town of Hartsville planning team members identified the following critical facilities (Table X-23) as assets that are considered the most important to the planning area. These facilities are susceptible to a range of impacts caused by this hazard. Ice storm impacts to critical facilities are similar across the entire planning area and are listed in detail in the ice storm hazard profile (Section 11). The following critical facilities would be vulnerable to ice storm events in the Town of Hartsville:

Table X-23. Critical Facilities at Risk

Type	Number
Municipal – City / Town / Village Hall	1

The population over 65 in the Town of Hartsville is estimated at 25 percent of the Town’s total population and children under the age of 5 are estimated at 5 percent. The population with a disability is estimated at 17 percent of the Town’s total population. An estimated 5.7 percent of the Town of Hartsville’s population live below the poverty level and less than 1 percent of the population speaks English “less than very well” (Table X-24).

Table X-24. Populations at Greater Risk

Jurisdiction	65 and Older	Under 5	With a Disability	Below Poverty Level	Limited English Speaking
Town of Hartsville	128	25	88	29	2

Historic losses are reported on a county-wide basis. Please see Section 11 of this Plan for additional information on historical and annualized losses for the entire planning area.

ANNEX X: TOWN OF HARTSVILLE

LANDSLIDE

The Town of Hartsville has no known areas susceptible or prone to landslides (Section 12). The Town of Hartsville has no known historical occurrences of landslides and does not anticipate any landslide events in the future. The municipality has determined that this hazard is not a threat to the community and therefore does not require further analysis.

ANNEX X: TOWN OF HARTSVILLE

LIGHTNING

HAZARD DESCRIPTION, LOCATION, & EXTENT

The Steuben County Multi-Jurisdictional Hazard Mitigation Plan Update provides a hazard description, location and extent of the lightning hazard for each participating jurisdiction (Section 13). Lightning events are not confined to specific geographic boundaries and are considered similar for all participating jurisdictions throughout the planning area.

HISTORICAL OCCURRENCES

There have been no recorded lightning events in the Town of Hartsville from 1996 through June 2025. The NCEI is a national data source organized under the National Oceanic and Atmospheric Administration and considered a reliable resource for hazards. However, historical lightning events have only been reported as independent events to the NCEI in recent years and remain widely underreported. The flash density for the planning area along with input from local team members was utilized in evaluating the jurisdiction’s risk. The flash density for the entire planning area indicates regular occurrences of lightning events that simply are not being reported.

PROBABILITY OF FUTURE EVENTS

Based on historical records and input from the planning team the probability of occurrence for future lightning events in the Town of Hartsville is considered “Highly Likely,” or an event probable in the next year. The planning team stated that lightning occurs regularly in the area.

VULNERABILITY AND IMPACT

The Town of Hartsville planning team members identified the following critical facilities as assets that are considered the most important to the planning area. These facilities are susceptible to a range of impacts caused by lightning events. Lightning impacts to critical facilities are similar across the entire planning area and are listed in detail in the lightning hazard profile (Section 13).

Table X-25. Critical Facilities at Risk

Type	Number
Municipal – City / Town / Village Hall	1

While all citizens are at risk to the impacts of lightning, forced relocation and disaster recovery disproportionately impacts low-income residents who lack the financial means to travel, afford a long-term stay away from home, and to rebuild or repair their homes. The population over 65 in the Town of Hartsville is estimated at 25 percent of the Town’s total population and children under the age of 5 are estimated at 5 percent. The population with a disability is estimated at 17 percent of the Town’s total population. An estimated 5.7 percent of the Town of Hartsville’s population live below the poverty level and less than 1 percent of the population speaks English “less than very well” (Table X-26).

Table X-26. Populations at Greater Risk

Jurisdiction	65 and Older	Under 5	With a Disability	Below Poverty Level	Limited English Speaking
Town of Hartsville	128	25	88	29	2

ANNEX X: TOWN OF HARTSVILLE

With no historical lightning events or losses, the impacts of lightning events can be considered “Limited” with injuries or illness treatable with first aid, critical facilities and services shut down for 24 hours or less, and less than 10 percent of property destroyed. Overall, the average losses anticipated for the Town of Hartsville due to lightning are considered negligible.

ANNEX X: TOWN OF HARTSVILLE

SEVERE WIND

HAZARD DESCRIPTION, LOCATION, EXTENT, & HISTORICAL OCCURRENCES

The Steuben County Multi-Jurisdictional Hazard Mitigation Plan Update provides a hazard description, location and extent of the wind hazard for each participating jurisdiction (Section 14). Wind events are not confined to specific geographic boundaries and are considered similar for all participating jurisdictions throughout the planning area.

HISTORICAL OCCURRENCES

Since 1996, 4 wind event is known to have occurred in the Town of Hartsville. Table X-27 presents information on known historical events impacting the Town of Hartsville.

Table X-27. Historical Wind Events, January 1996 – June 2025⁵

Jurisdiction	Date	Magnitude (knots)	Deaths	Injuries	Property Damage	Crop Damage
Town of Hartsville	7/20/2017	50	0	0	\$1,400	\$0
TOTALS		(Max Extent)	0	0	\$1,400	\$0

Based on the list of historical severe wind events for the Town of Hartsville, 2 of the reported events have occurred since the 2019 Plan.

PROBABILITY OF FUTURE EVENTS

While some incidents may be reported at the local municipal level, as indicated above, county level events provide a more robust risk assessment for each participating jurisdiction. According to historical records for the Steuben County planning area, the Town of Hartsville can expect to experience a wind event every year. This frequency supports a “Highly Likely” probability of future events.

VULNERABILITY AND IMPACT

The Town of Hartsville planning team members identified the following critical facilities as assets that are considered the most important to the planning area. These facilities are susceptible to a range of impacts caused by wind events. Wind impacts to critical facilities are similar across the entire planning area and are listed in detail in the wind hazard profile (Section 14).

Table X-28. Critical Facilities at Risk

Type	Number
Municipal – City / Town / Village Hall	1

According to the American Community Survey (ACS) five-year estimates for 2024, a total of 47 manufactured homes are located in the Town of Hartsville (12 percent of total housing stock). In addition, 51 percent (approximately 196 structures) of the housing units were built before 1980. These structures would typically be built to lower or less stringent construction standards than newer construction and may be more susceptible to damage during significant wind events.

⁵ Historical events are reported from 1996 through June 2025. Magnitude is listed when available. Damage values are in 2025 dollars. Only events with damages, injuries or fatalities were included in the table.

ANNEX X: TOWN OF HARTSVILLE

Table X-29. Structures at Greater Risk

Jurisdiction	SFR Structures Built Before 1980	Manufactured Homes
Town of Hartsville	196	47

While all citizens are vulnerable to the impacts of wind events, forced relocation and disaster recovery disproportionately impacts low-income residents who lack the financial means to travel, afford a long-term stay away from home, and to rebuild or repair their homes. The population over 65 in the Town of Hartsville is estimated at 25 percent of the Town’s total population and children under the age of 5 are estimated at 5 percent. The population with a disability is estimated at 17 percent of the Town’s total population. An estimated 5.7 percent of the Town of Hartsville’s population live below the poverty level and less than 1 percent of the population speaks English “less than very well” (Table X-30).

Table X-30. Populations at Greater Risk

Jurisdiction	65 and Older	Under 5	With a Disability	Below Poverty Level	Limited English Speaking
Town of Hartsville	128	25	88	29	2

Structural impact of wind events experienced in the Town of Hartsville would be considered “Limited,” with injuries or illness treatable with first aid, less than 10 percent of property destroyed and critical facilities shut down for less than 24-hours. Over the 29.5-year reporting period there has been a total of \$1,400 damages (2025 dollars) in the Town of Hartsville due to wind events. The estimated average annual loss from a wind event is \$0.

Table X-31. Estimated Annualized Losses⁶

Jurisdiction	Total Property & Crop Loss	Annual Loss Estimate
Town of Hartsville	\$1,400	\$0

⁶ Rounded to nearest hundred.

ANNEX X: TOWN OF HARTSVILLE

SNOWSTORM

HAZARD DESCRIPTION, LOCATION, EXTENT, & HISTORICAL OCCURRENCES

The Steuben County Multi-Jurisdictional Hazard Mitigation Plan Update provides a hazard description, location, and extent of the snowstorm hazard for each participating jurisdiction (Section 15). Snowstorm events are not confined to specific geographic boundaries and are considered similar for all participating jurisdictions throughout the planning area. For the purposes of evaluating this hazard, the following NCEI reporting categories are included under snowstorm: blizzard, heavy snow, and winter storm. Historical snowstorm data for the County, including the Town of Hartsville, are provided on a county-wide basis per the NCEI database. Therefore, all historical events are listed in Section 15 of the Plan Update.

PROBABILITY OF FUTURE EVENTS

According to historical records for the Steuben County planning area, the Town of Hartsville can expect to experience a snowstorm event approximately 2 times each year. This frequency supports a “Highly Likely” probability of future events.

VULNERABILITY AND IMPACT

While the entirety of the Steuben County planning area, including the Town of Hartsville, is exposed to snowstorm events, existing buildings, infrastructure, and critical facilities are not likely to sustain significant damage from these events. However, the Town of Hartsville planning team members identified the following critical facilities (Table X-32) as assets that are considered the most important to the planning area. These facilities are susceptible to a range of impacts caused by this hazard. Snowstorm impacts to critical facilities are similar across the entire planning area and are listed in detail in the snowstorm hazard profile (Section 15). The following critical facilities would be vulnerable to snowstorm events in the Town of Hartsville:

Table X-32. Critical Facilities at Risk

Type	Number
Municipal – City / Town / Village Hall	1

The population over 65 in the Town of Hartsville is estimated at 25 percent of the Town’s total population and children under the age of 5 are estimated at 5 percent. The population with a disability is estimated at 17 percent of the Town’s total population. An estimated 5.7 percent of the Town of Hartsville’s population live below the poverty level and less than 1 percent of the population speaks English “less than very well” (Table X-33).

Table X-33. Populations at Greater Risk

Jurisdiction	65 and Older	Under 5	With a Disability	Below Poverty Level	Limited English Speaking
Town of Hartsville	128	25	88	29	2

Historic losses are reported on a countywide basis. Total losses reported in the planning area due to snowstorms are estimated at \$836,200 with an average annualized loss of \$28,300. Based on historic losses, the impact of snowstorms in the Steuben County planning area, including the Town of Hartsville, can be considered “Limited” severity of impact, meaning critical facilities and

ANNEX X: TOWN OF HARTSVILLE

services shut down for 24 hours or less, and less than 10 percent of property destroyed or with major damage.

Table X-34. Snowstorm Estimated Annualized Losses

Jurisdiction	Property & Crop Loss	Annual Loss Estimates
Steuben County	\$836,200	\$28,300

ANNEX X: TOWN OF HARTSVILLE

TORNADO

HAZARD DESCRIPTION, LOCATION, & EXTENT

The Steuben County Multi-Jurisdictional Hazard Mitigation Plan Update provides a hazard description, location and extent of the tornado hazard for each participating jurisdiction (Section 16). The risk of a tornado is not confined to specific geographic boundaries, and the risk of an event is considered similar for all participating jurisdictions throughout the planning area.

HISTORICAL OCCURRENCES

According to the National Centers for Environmental Information (NCEI) Storm Events database, from 1972 through June 2025, no tornado events are known to have impacted the Town of Hartsville.

PROBABILITY OF FUTURE EVENTS

Historical tornado events are often reported on a county-wide basis, particularly when multiple smaller jurisdictions are impacted. While some incidents may be reported at the local municipal level, county level events provide a more robust risk assessment for each participating jurisdiction due to their similar geographic locations. According to historical records for the Steuben County planning area, the Town of Hartsville can expect to experience a tornado event once every three to four years. This frequency supports a “Likely” probability of future events.

VULNERABILITY AND IMPACT

The Town of Hartsville planning team members identified the following critical facilities as assets that are considered the most important to the planning area. These facilities are susceptible to a range of impacts caused by tornado events. Tornado impacts to critical facilities are similar across the entire planning area and are listed in detail in the tornado hazard profile (Section 17).

Table X-35. Critical Facilities at Risk

Type	Number
Municipal – City / Town / Village Hall	1

According to the American Community Survey (ACS) five-year estimates for 2024, a total of 47 manufactured homes are located in the Town of Hartsville (12 percent of total housing stock). In addition, 51 percent (approximately 196 structures) of the housing units were built before 1980. These structures would typically be built to lower or less stringent construction standards than newer construction and may be more susceptible to damage during tornado events.

Table X-36. Structures at Greater Risk

Jurisdiction	SFR Structures Built Before 1980	Manufactured Homes
Town of Hartsville	196	47

While all citizens are at risk to the impacts of a tornado event, forced relocation and disaster recovery disproportionately impacts low-income residents who lack the financial means to travel, afford a long-term stay away from home, and to rebuild or repair their homes. The population over 65 in the Town of Hartsville is estimated at 25 percent of the Town’s total population and children under the age of 5 are estimated at 5 percent. The population with a disability is estimated at 17

ANNEX X: TOWN OF HARTSVILLE

percent of the Town’s total population. An estimated 5.7 percent of the Town of Hartsville’s population live below the poverty level and less than 1 percent of the population speaks English “less than very well” (Table X-37).

Table X-37. Populations at Greater Risk

Jurisdiction	65 and Older	Under 5	With a Disability	Below Poverty Level	Limited English Speaking
Town of Hartsville	128	25	88	29	2

The total loss estimate due to tornado events is \$0 (in 2025 dollars), having an approximate annual loss estimate of \$0. Based on historic damages and best available data the impact of a tornado event on the Town of Hartsville would be considered “Limited,” with injuries and illness treatable with first aid, critical facilities and services shutdown for 24-hours or less and less than 10 percent of properties destroyed or with major damage.

Table X-38. Estimated Average Annual Losses

Jurisdiction	Total Property & Crop Loss	Annual Loss Estimate
Town of Hartsville	\$0	\$0

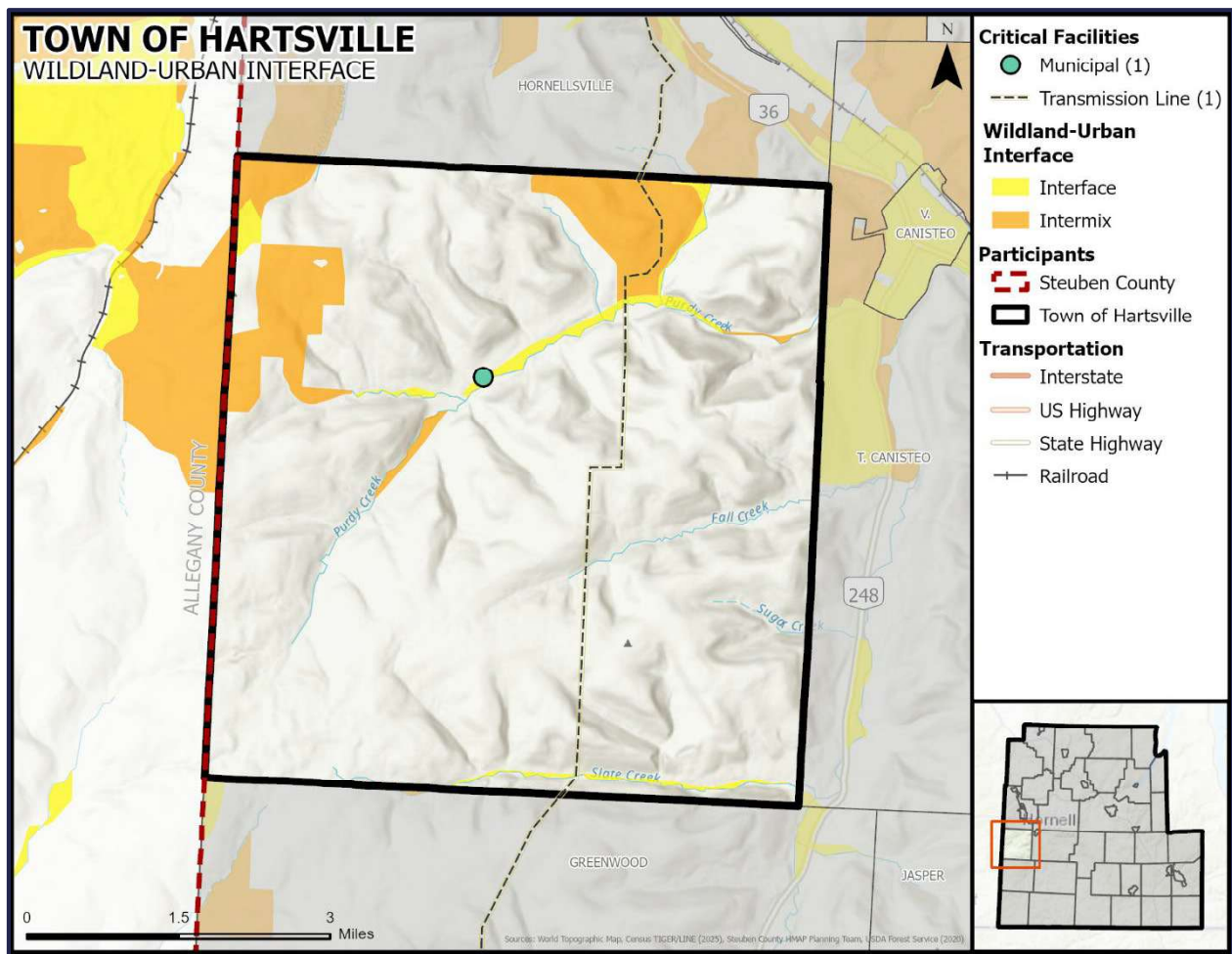
ANNEX X: TOWN OF HARTSVILLE

WILDFIRE

HAZARD DESCRIPTION, & LOCATION

The Steuben County Multi-Jurisdictional Hazard Mitigation Plan Update provides a hazard description of the wildfire hazard for each participating jurisdiction (Section 17). A wildfire event can be a potentially damaging consequence of drought conditions, lightning, or wind events, if the conditions allow. Wildfires can vary greatly in terms of size, location, intensity, and duration. While wildfires are not confined to any specific geographic location, they are most likely to occur in open grasslands, highly vegetative areas, or along the forest floor, when conditions are favorable. The threat to people and property from a wildfire event is greater in the fringe areas where developed areas meet open grass lands, such as the Wildland Urban Interface (WUI) (Figure X-4). The Town of Hartsville planning area is considered at low risk for wildfires.

Figure X-4. Town of Hartsville Wildland Urban Interface Map



The New York State Department of Environmental Conservation (NYS DEC), Division of Forest Protection regularly identifies Fire Danger Rating Area (FDRA) Risk across the state. Reviewing a combination of temperature, wind, relative humidity, fuel and/or drought conditions, the Division of Forest Protection issues color coded danger alerts. The entire planning area, including the Town of Hartsville, had a “Low” FDRA Risk rating as of February 2026 (Section 17, Figure 17-2).

ANNEX X: TOWN OF HARTSVILLE

EXTENT

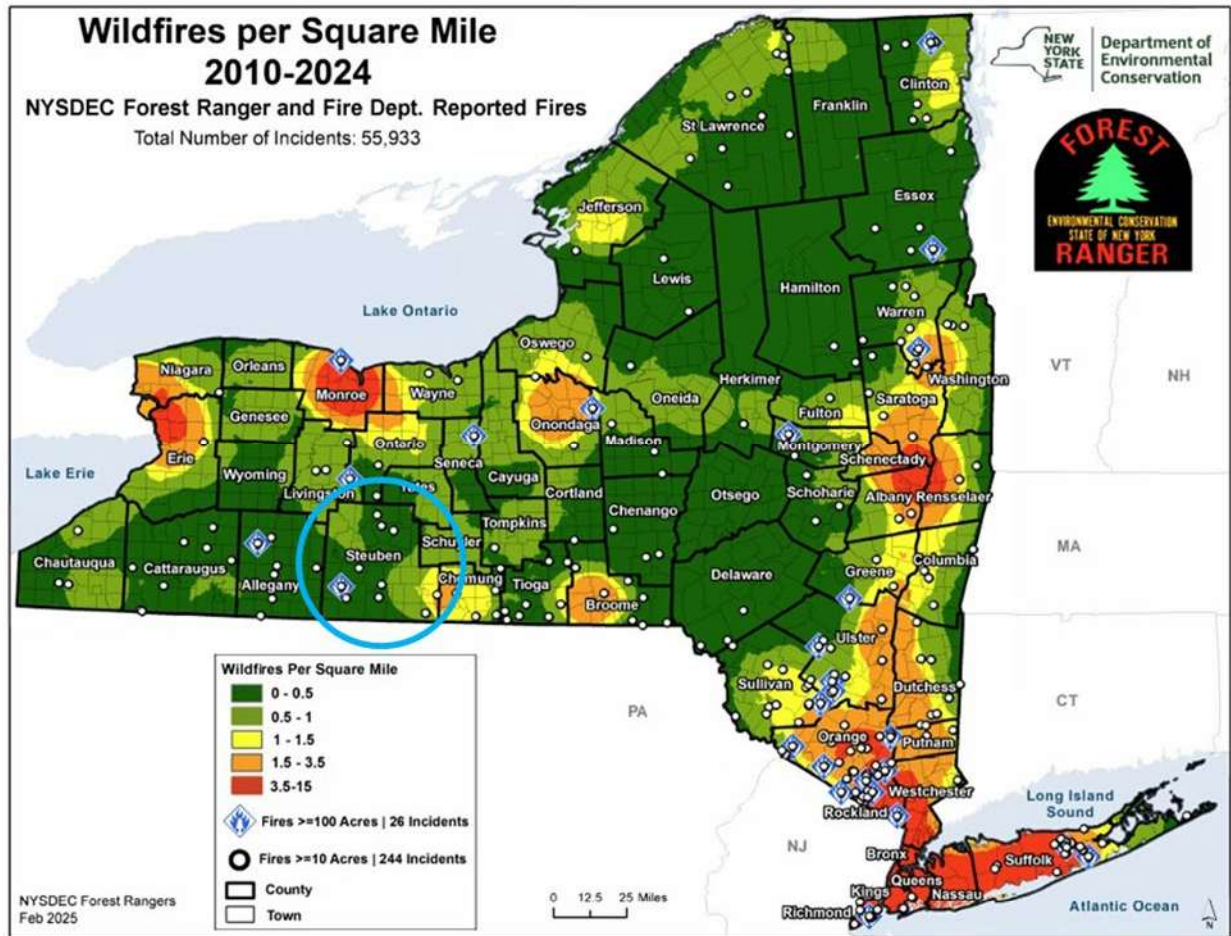
Risk for a wildfire event is measured in terms of magnitude and intensity using the Keetch Byram Drought Index (KBDI), a mathematical system for relating current and recent weather conditions to potential or expected fire behavior. The KBDI is available at the county level. The Steuben County Hazard Mitigation Plan Update provides KBDI levels and descriptions along with the range of historical KBDI levels for the planning area (Section 17).

The average extent to be mitigated for the planning area is a KBDI of 200 to 400. At this level fires more readily burn and will carry across an area with no gaps. Heavier fuels will not readily ignite and burn. Expect smoldering and the resulting smoke to carry into and possibly through the night. Based on historical records and readily available fuel, the planning area can anticipate a KBDI range from 0 to 500. At the high end of this range fire intensity begins to significantly increase. Fires will readily burn in all directions exposing mineral soils in some locations. Larger fuels may burn or smolder for several days, creating possible smoke and control problems.

The NYS DEC provides historical wildfire statistics from 2010 through 2024 (Figure X-5). Detailed data on historic wildfires in the planning area, including damages, acres burned, fatalities, or injuries, was not available. There were ten wildfires greater than 10 acres in Steuben County and one incident over 100 acres during that same period. The Steuben County planning area can anticipate limited future wildfire events, typically burning less than 10 acres with infrequent events exceeding 10 acres.

ANNEX X: TOWN OF HARTSVILLE

Figure X-5. Wildfires per Square Mile, 2010 – 2024



HISTORICAL OCCURRENCES

According to the New York State Ranger Wildland Fire Reporting Database, between 2008 and 2025 there were 89 wildfire events in Steuben County. These events were reported at the municipal level. Event location indicates the point of ignition. Over the 18 year reporting period, one wildfire event was reported for the Town of Hartsville (Table X-39). Wildfire events are often reported on a county-wide basis, or otherwise under-reported for individual municipalities, particularly in smaller communities.

Most of the incidents were due to debris burning (33), followed by power lines (13), equipment (11), incendiary (10), campfire (8), smoking (6), miscellaneous (5), children (2), and railroad (1). Based on data provided for historical wildfire events for Steuben County planning area, 29 events have occurred since the 2019 Plan.

ANNEX X: TOWN OF HARTSVILLE

Table X-39. NYS Forest Service Wildfire Events, Town of Hartsville, 2008 – 2025⁷

Jurisdiction	Incident Name	Fire Start Date	Acres Lost	Deaths	Injuries	Homes Lost	Other Structures Lost
Town of Hartsville	Hartsville Fire	3/24/2009	3.5	0	0	0	0

PROBABILITY OF FUTURE EVENTS

While some incidents may be reported at the local municipal level, as indicated above, incidents in the County as a whole provide a more robust risk assessment for each participating jurisdiction, as favorable wildfire conditions would typically be similar across the planning area. With 89 reported events in an 18-year period, a wildfire event within the Steuben County planning area, including the Town of Hartsville, is “Highly Likely” meaning an event is probable within the next year.

VULNERABILITY AND IMPACT

The Town of Hartsville planning team members identified the following critical facilities as assets that are considered the most important to the planning area. These facilities are susceptible to a range of impacts caused by wildfire events. Wildfire impacts on critical facilities are similar across the entire planning area and are listed in detail in the wildfire hazard profile (Section 17).

Table X-40. Critical Facilities at Risk

Type	Number
Municipal – City / Town / Village Hall	1

For the Steuben County planning area, including the Town of Hartsville, historical event data shows the impact from a wildfire event can be considered limited, meaning the shutdown of facilities and services for 24 hours or less and less than 10 percent of property is destroyed or with major damage. However, with the 5 historical reported injuries the impact of future events can be considered “Major” with multiple injuries resulting in permanent disability possible, depending on the size and duration of the event.

⁷ NYS Forest Ranger Wildland Fire Reporting Database. https://data.ny.gov/d/b7g8-5ywk?category=Energy-Environment&view_name=NYS-Forest-Ranger-Wildland-Fire-Reporting-Database

ANNEX X: TOWN OF HARTSVILLE

HUMAN-CAUSED HAZARDS

The Steuben County Multi-Jurisdictional Hazard Mitigation Plan Update provides a detailed hazard profile for human-caused hazards including hazardous materials, infestation, and water supply contamination. Information on these hazards is limited and typically reported at the county level. As such, the evaluation of human-caused hazards is considered similar for all jurisdictions in the Steuben County planning area. Please see Appendix A of this Plan Update for additional information on human-caused hazards evaluated for this plan.

ANNEX X: TOWN OF HARTSVILLE

PREVIOUS MITIGATION ACTIONS

TOWN OF HARTSVILLE PREVIOUS MITIGATION ACTIONS									
*Projects related to Critical Facilities (CF) will protect the facility to the 500-year event or worst damage scenario, whichever is greater.									
Project #	Proposed Action	Type of Action	Hazard(s) Addressed	Priority	Estimated Cost	Potential Funding Sources	Lead Agency/Department Responsible	Implementation Schedule	2026 Analysis
1	Acquire generator for the Town Barn (emergency shelter location)	Structural Project; Emergency Services	All	High	Medium	FEMA - PDM, USDA-RD, Community Facilities Grant	Town Supervisor	Short	Complete. Generators have been installed at the Town Barn.
2	Construct a Community Center building.	Structural Project	All	Medium	High	FEMA - PDM, USDA-RD, Community Facilities Grant	Town Supervisor	Long	Complete. The Town replaced roof and installed a generator at Town Hall (Community Center).
3	Purdy Creek stabilization project-upstream of Bearlick Hollow Rd	Structural Project; Prevention; Natural Resources Protection	Flood	Low	High	FEMA - PDM	Town Highway Dept	Long	Complete. The County has widened the creek to enhance capacity. New action #4 created for continued improvements recommended by Steuben County Soil and Water Conservation District.

ANNEX X: TOWN OF HARTSVILLE

NEW MITIGATION ACTIONS

TOWN OF HARTSVILLE MITIGATION ACTIONS

*Projects related to Critical Facilities (CF) will protect the facility to the 500-year event or worst damage scenario, whichever is greater.														
Project #	Goal / Objective being Met	Hazard to be Mitigated	Project Name and Description of the Problem	Description of the Solution	CF?*	EHP Issues	Estimated Timeline	Lead Agency	Estimated Costs	Estimated Benefits	Potential Funding Sources	Priority	Community Lifeline	Action Type
1	6.1 6.2 6.3	Flood	Culvert and drainage upgrades: Throughout the community culverts are undersized and in need of replacement. The hydraulic capacity of this structure may not comply with commonly accepted standards. This project protects the community and reduces the risk of flooding.	Recurrent flooding is a concern. There needs to be an assessment performed on the entire culvert system to identify priority areas and highlight mitigation projects.	No	Further Review Required	60 Months	Town Administration	\$1,000,000	Reduce risk of flood damages through improved drainage capacity; Reduce risk of injuries to citizens; Reduce burden on emergency services during and after a flood event.	HMGP	H	Safety/Security	Structure and Infrastructure
2	1.4 2.1 3.1	Extreme Heat, Flood, Ice Storm, Severe Wind, Tornado, Wildfire, Infestations	Tree Canopy Assessment: Perform an assessment to determine how to manage current trees, if there needs to be replacements or removals, and what trees would be efficient for a tree canopy. This project protects public safety.	Impact from hazard events and infestations are damaging trees. There is a need to determine how to combat this and reforest the area to create a tree canopy.	No	Further Review Required	60 Months	Town Administration	\$100,000	Reduce damages to infrastructure; Reduce damages associated with power outages.	HMGP	H	Safety/Security	Natural Systems Protection Structure and Infrastructure
3	6.1 6.2 6.3	Flood	Road Assessment: There is a need for a study to determine if the current dirt roads can be regraded or replaced with gravel due to the constant	Conduct assessment to determine cause of washout and implement recommended mitigation activities.	No	Further Review Required	60 Months	Town Administration	\$100,000	Reduce damages to infrastructure; Ensure continuity of critical services during and after event; Reduce damages	HMGP	H	Safety/Security	Structure and Infrastructure

ANNEX X: TOWN OF HARTSVILLE

TOWN OF HARTSVILLE MITIGATION ACTIONS

*Projects related to Critical Facilities (CF) will protect the facility to the 500-year event or worst damage scenario, whichever is greater.

Project #	Goal / Objective being Met	Hazard to be Mitigated	Project Name and Description of the Problem	Description of the Solution	CF?*	EHP Issues	Estimated Timeline	Lead Agency	Estimated Costs	Estimated Benefits	Potential Funding Sources	Priority	Community Lifeline	Action Type
4	6.1 6.2 6.3	Flood	washout during hazard events. This project protects public safety,							associated with power outages; Reduce risk of injuries or fatalities to vulnerable populations				
			Stream Repair: There is a need for targeted actions to restore, stabilize, and repair streams after major flood events. This is a more urgent repair than long-term stream stabilization. This project protects the community and reduces risk of flooding.	Purdy Creek flood stream repair (Bennetts Creek & Tributaries).	No	Further Review Required	60 Months	Steuben County Soil and Water Conservation District, in coordination with Town Administration	\$1,000,000	Reduce risk of flood damages through improved drainage capacity; Reduce risk of injuries to citizens; Reduce burden on emergency services during and after a flood event.	HMGP	M	Safety/Security	Natural Systems Protection Structure and Infrastructure
5	1.1 1.2 2.1 2.2 3.1 3.2	Drought, Extreme Cold, Extreme Heat, Flood, Hail, Ice Storm, Lightning, Severe Wind, Snowstorm, Tornado, Wildfire, Infestations, Hazardous Materials, Water Supply Contamination	Public Education Program: The public may not be aware of the risk of natural hazards as it is related to the County. This action promotes public safety.	Expand public education on ways to protect lives and mitigate property before and during hazard events. This educational information would be disseminated via social media, press releases to educate citizens on the hazards and how to mitigate against them.	No	N/A	12 months	Town Supervisor / Administration	\$10,000	Reduce risk to citizens by educating the public on how to prepare for hazards and disasters.	Local Budget	H	Safety/Security Communication	Education and Awareness

ANNEX X: TOWN OF HARTSVILLE

TOWN OF HARTSVILLE MITIGATION ACTIONS

*Projects related to Critical Facilities (CF) will protect the facility to the 500-year event or worst damage scenario, whichever is greater.															
Project #	Goal / Objective being Met	Hazard to be Mitigated	Project Name and Description of the Problem	Description of the Solution	CF?*	EHP Issues	Estimated Timeline	Lead Agency	Estimated Costs	Estimated Benefits	Potential Funding Sources	Priority	Community Lifeline	Action Type	
															<p>Description of the Solution: Monthly tips can be promoted for each hazard type via social media or other media outlets: Example messaging could include: Drought: Promote drought tolerant landscaping guidance for home and business owners; Extreme Cold: Provide information on when and how to wrap exposed and outdoor pipes; Extreme Heat: Promote the signs of heat exhaustion and heat stroke; Flood: Promote elevation of indoor and outdoor appliances or knowledge of the BFE; Hail: Promote hail resistant roofing, siding and windows.; Ice Storm: Trim trees to prevent damage from ice accumulation; Lightning: Make homeowners and businesses aware of indoor surge protection; Severe Wind: Promote trimming of trees and branches to avoid flying debris issues; Snowstorm: Promote tips for winterizing home exterior by caulking/weather stripping doors, adding insulation to attic, walls, and crawl spaces, and/or install storm windows or cover windows with plastic sheeting; Tornado: Inform home and business owners know when and where in their home or business they can take shelter; Wildfire: Create a defensible space for homeowners campaign; Infestations: Promote information on monitoring and early detection; Hazardous Materials: Promote information on property and home hardening; Water Supply Contamination: For residents with private wells promote testing and education on common water contaminants.</p>

ANNEX X: TOWN OF HARTSVILLE

CAPABILITY ASSESSMENT

Community Capability Checklist	Town of Hartsville
Plans	
Capital Improvements Plan	
Climate Change Adaptation Plan	
Community Wildfire Protection Plan	
Comprehensive / Master Plan / Land Use Plan	
Continuity of Operations Plan	
Drought Contingency Plan / Protocol on Water Restrictions	
Economic Development Plan	
Emergency Management Action Plan	
Emergency Operations Plan	
Evacuation Plan	
Extreme Heat Protocol	
Hazard Mitigation Plan	X
Local Emergency Operations Plan	
Stormwater Management Plan	
Transportation Plan	
Policies / Ordinances	
Acquisition of Land for Open Space and Public Recreation Uses	
Building Codes	
Fire Codes	
Floodplain Ordinances	X
Manufactured Home Restrictions	

ANNEX X: TOWN OF HARTSVILLE

Community Capability Checklist	Town of Hartsville
Natural Hazards Specific Ordinance	
Stormwater Ordinances	
Subdivision Regulations	
Wildfire Ordinances	
Zoning Ordinance / Land Use Restrictions	
Programs	
Firewise Communities	
Floodplain Maps / Flood Insurance Studies	X
Hydrologic / Hydraulic Studies	
Local Citizen Groups or Non-Profits	
Maintenance Programs	
Mutual Aid Agreements	X
National Flood Insurance Program Participant	X
NFIP Community Rating System Participant	
Natural Disaster / Safety School Programs	
Property Acquisition Programs	
Public Education / Awareness Programs	
Storm Drainage Systems Maintenance Programs	
Public / Private Partnerships Related to Hazards	
Stream Maintenance Program	
StormReady Community	
Warning Systems / Services (Reverse 911, Outdoor Warning Sirens)	

ANNEX X: TOWN OF HARTSVILLE

Community Capability Checklist	Town of Hartsville
Staff / Departments	
Civil Engineer	
Building Code Official / Code Enforcement	X
Community Planner	
Emergency Manager	
Engineers	
Environmental Conservation Specialist	
Floodplain Administrator	X
Geographic Information System (GIS) Coordinator	
Mitigation Planning Committee	
Personnel with Hazard Knowledge	
Planners	
Planning Board	
Public Information Official	
Resource Development / Grant Writer	
Risk Assessment	
Warning Systems / Services	